

FOR SALE

53 Acres

Staton Creek "L" Pasture

\$318,000

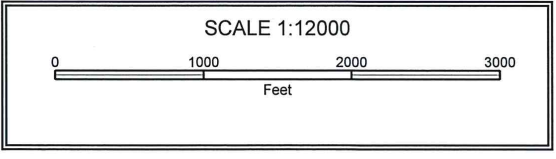
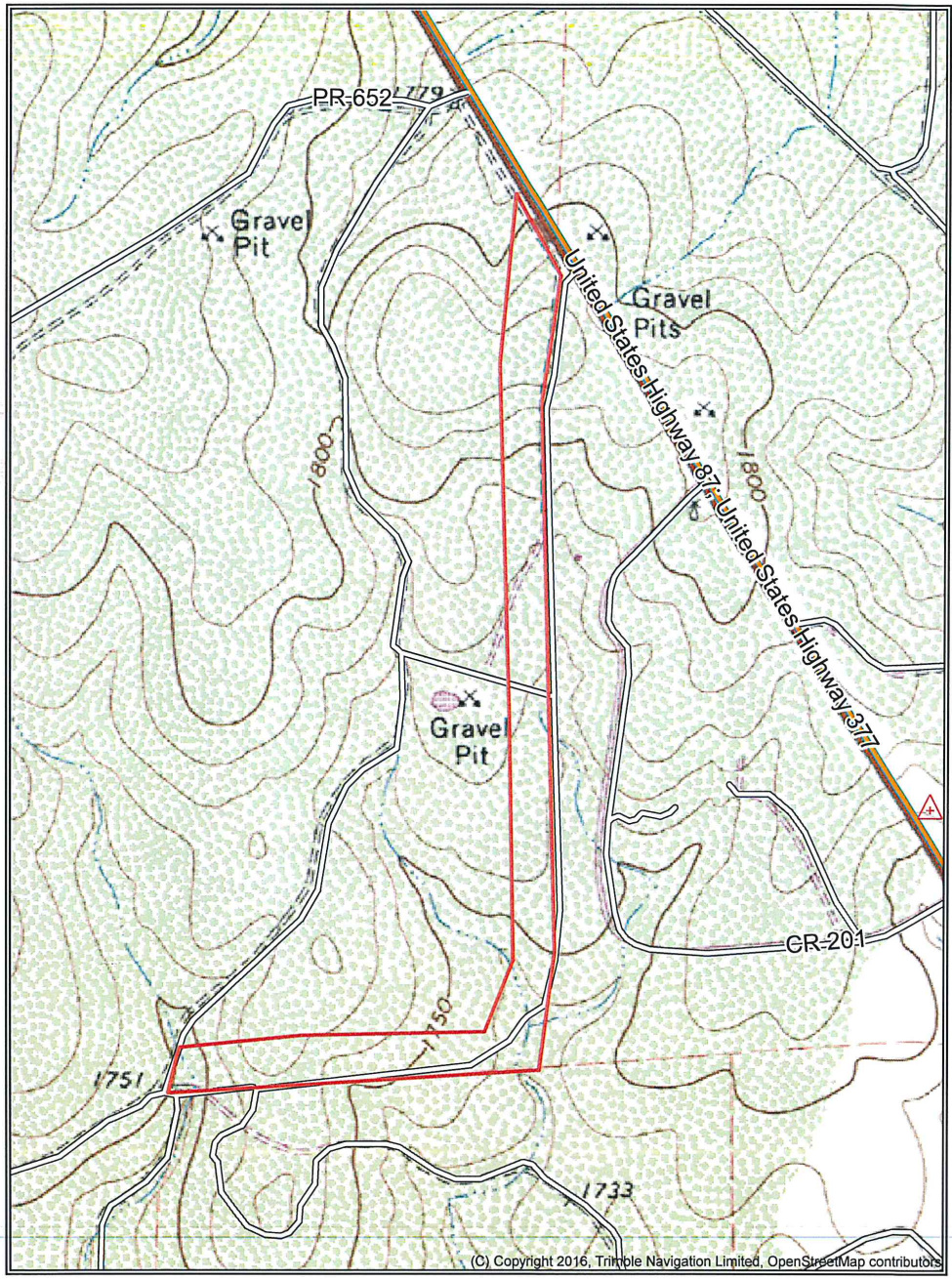
53 +/- Acres

Fifty-three acres south of Brady, Texas with access off U.S Highway 87/377. Great investment property that could be divided to give someone a little place to hunt or build a home with some privacy. Large Live Oak trees and plenty of cover. Only five miles south of town.



For more information, please visit EdgeoftheWest.net

EDGE OF THE WEST



For more information, please visit EdgeoftheWest.net