

FOR SALE

13.9 Acres on FM 2028 in Brady, Texas

Premium hillside location and homesite.

\$15,000 per Acre

13.9 Acres

This is a premium hillside location and homesite two miles west of town and three miles from Brady Lake. This tract has frontage on FM 2028; "The Lake Road," which has car traffic but little, if any, eighteen wheelers or truck traffic.

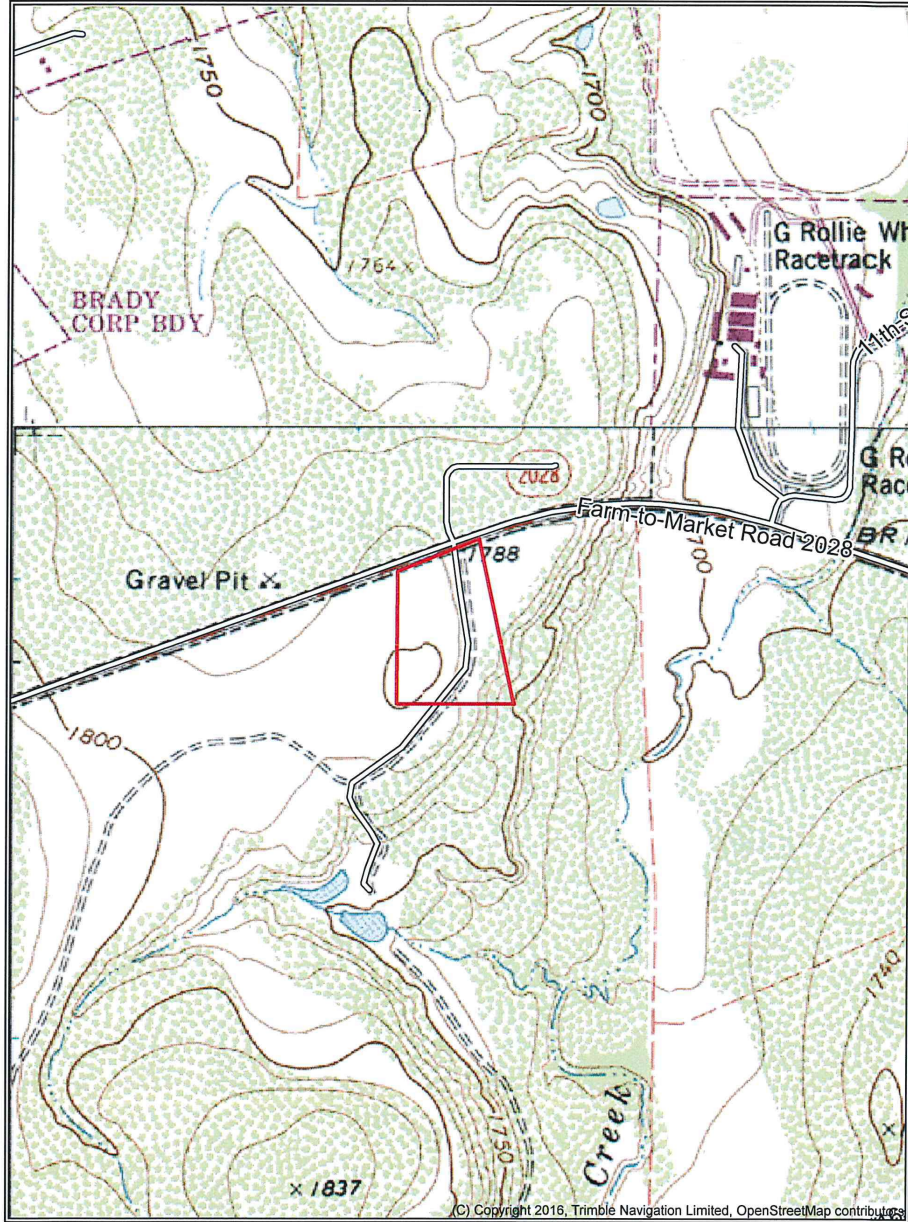
It is well-timbered with Live Oaks and has some Mesquites and native brush. It is located outside the city limits, but a city water meter will be available very soon. Private and conveniently located close to everything. A home built here will have wonderful panoramic views to the east. Fully fenced.

Priced at \$15k an acre.



For more information, please visit EdgeoftheWest.net

EDGE OF THE WEST
LAND COMPANY LLC
— REAL ESTATE —



For more information, please visit EdgeoftheWest.net